

ONLINE 12PM FRIDAY 6TH OCTOBER



Welcome

Welcome to the Inaugural Hillview Speckle Park Production Sale.

This sale has been many years in the making. Our journey in Speckle Park began way back in 2010 with seeing an advert in The Land newspaper for the first public auction of speckle park cattle in Australia, and some of the animals purchased as calves at that sale still remain in our herd today.

In 2016 the Hillview Speckle Park Stud was born to compliment our commercial speckle operation. With a heavy emphasis on good feet and great udders and milking ability we have sourced a wide variety of genetics from Australia and around the world, and are proud to be able to present this offering today.

We would like to thank everyone that has helped us in our journey to make this stud and sale the reality it is today.



Guest Vendors

WOLF LAKE SPECKLE PARK

Wolf Lake Speckle Park is located in Alberta, Canada. We started raising purebred Speckle Park in 2013. The first bull we purchased is a bull that needs little introduction as he has made a huge impact on the breed around the world in JSF Trade Secret 11A. From there we have continued on breeding and promoting this breed that has so much to offer. Thank you Hillview Speckle Park for inviting us to be a part of this sale.



FLEETWOOD SPECKLE PARK

Fleetwood Speckle Park is owned and operated by Dave & Cassie. We've been focused on breeding seed stock and developing embryos and semen since 2012. Primarily a cow/calf operation with a small feedlot with direct to consumer sales, we run approximately 60 purebred and commercial cows with purebred SP bulls. Our aim is to produce show ring quality animals that can walk directly out to pasture/perform in production environments.

Sale Information

Date and Time

Commencing Friday 6th October at 12 noon with a timed finish commencing Saturday 7th October 2023 at 2pm.

Location

THIS IS AN ONLINE ONLY AUCTION
Farm Open Days are hosted onsite at 'Hillview'
432 Dalwood Road Leconfield, NSW 2335

Inspections

Cattle will be on display at our on-farm open days: Saturday 30th September and Friday 6th October 9am - 4pm and on Saturday 7th October from 9am – 2pm.

All of our females have been pasture raised and supplemented with silage and hay.

Catalogue Weights as at 6th August 2023.

Prior Inspections

If you are unable to make it to one of our open days we welcome you to make an appointment for a private inspection. Please phone Robert on 0421 032 072 to make arrangements.

Visitor Safety

Every care has been taken to ensure visitor safety and comfort whilst on farm; however cattle can be unpredictable and have a mind of their own so please take care and be aware of your surroundings when moving through the animals. Visitors enter the cattle pens at their own risk. Children are not allowed in the pens with the animals.

Buyers Registration

All purchasers must be registered with Elite Livestock Auctions to be able to participate in this sale. If you require help with this process please contact Elite on 1300 259 742.

Representatives from Thomas Livestock will be onsite Saturday 7th October from 9am for anyone requiring assistance in bidding on their chosen lots.

Supplementary Sheet

An up to date supplementary sheet will be made available online prior to the sale.

Transport

Transport and shipping costs are the buyer's responsibility. The vendors will offer complimentary local delivery for purchasers within a 100km radius of the sale. For interstate transport we recommend:

C & K Dolinski Transport - 0428 892 479.

Payment Terms

ALL LIVE LOTS WILL REMAIN AT THE PROPERTY UNTIL PAYMENT HAS BEEN MADE. Settlement and transport of live lots to be arranged within 7 days of the sale date. Purchasers of genetic lots will be issued a release on payment. Genetics are held at Northern Artificial Breeders in Scone and Holbrook Breeders Australia.

Insurance

Cattle become the responsibility of the purchaser at the completion of the online auction. All care will be taken with your animals whilst awaiting delivery. We strongly recommend that you insure your new animals.

Herd Health

All animals have met all necessary health requirements and have been treated with 7 in 1 and Arrest Easy Dose, unless otherwise stated. Bulls have been semen tested and received Multimin and Vibrovax.

Taking Your New Animal Home

Our animals have been handled in a herd situation using quad bikes and side by side. They have not been exposed to dogs and horses. For these animals it is the first time that they will have been separated from their herd mates and this may cause stress and unusual behaviour. Please take this into account and have appropriate cattle in the yards to assist with assimilation to your herd.

THOMAS LIVESTOCK



P.O. BOX 36 BRANXTON, NSW 2335

Pedigree Assured

All animals in the sale are parent verified and carry the SPI Pedigree Assurance tick.

Guarantee

In the unlikely event of infertility, provided it is not caused by an injury or disease contracted since leaving the sale, we will endeavour to replace with an animal of comparable value or credit to the full purchase price minus salvage value to be used at a future Hillview Sale. This guarantee does not apply to a female that is entered into an embryo transfer program. The purchaser shall make any claim in writing accompanied by a veterinary certificate within 6 months of the date of the sale.

Catalogue Disclaimer

All reasonable care has been taken by the vendors to ensure that the information provided in this catalogue is correct at the time of publication. However, neither the vendors nor the selling agents make any other representations about the accuracy, reliability or completeness of any information provided and do not assume any responsibility for the use or interpretation of the information included.

Genetic Testing Key

MSTN	Carrier	Carries one copy of the myostatin gene
	Non-Carrier	Does not carry the gene
POLL	PcPc	Homozygous polled
	HPc	Carries one copy of the horn gene
COAT	ED/ED	Homozygous black
	ED/e	Dominant black/recessive red
	ED/E+	Dominant/carrier of wild type
Leptin	CC, CT, or TT	A Leptin TT genotype contributes to increased weaning weight, milk production, fat at the P8 and marbling compared to a CC genotype.



Breedplan & EBVs

EBV	<i>Estimated Breeding Values</i>
ACC%	<i>EBV Accuracy</i>
GL	<i>Gestation Length</i>
BW	<i>Birth Weight</i>
200	<i>200 day weight</i>
400	<i>400 day weight</i>
600	<i>600 day weight</i>
MCW	<i>Mature cow weight</i>
Milk	<i>200 Day Milk</i>
SS	<i>Scrotal size</i>
CWT	<i>Carcass Weight</i>
EMA	<i>Eye Muscle Area</i>
Rib	<i>Rib fat</i>
Rump	<i>Rump fat</i>
RBY	<i>Retail Beef Yield</i>
IMF	<i>Intramuscular Fat</i>

All Breedplan data is as at August 2023.

Percentile Bands for 2021 Born Calves

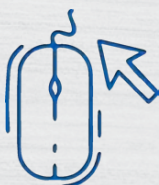
Percentile Band	Gestation Length (days)	Birth Wt (kg)	200 Day Wt (kg)	400 Day Wt (kg)	600 Day Wt (kg)	Mat Cow Wt (kg)	Milk (kg)	Scrotal Size (cm)	Carcase Wt (kg)	Eye Muscle Area (sq cm)	Rib Fat (mm)	Rump Fat (mm)	Retail Beef Yield (%)	IMF (%)
Top Value	-3.6	-3.2	+45	+75	+90	+98	+12	+2.4	+59	+3.5	+3.6	+4.9	+3.1	+1.8
Top 1%	-2.5	-1.7	+33	+49	+66	+73	+10	+1.5	+39	+2.2	+2.3	+3.1	+1.9	+1.2
Top 5%	-1.7	-0.7	+27	+41	+55	+61	+8	+1.1	+33	+1.7	+1.6	+2.1	+1.4	+0.8
Top 10%	-1.3	-0.2	+24	+37	+50	+54	+7	+0.9	+30	+1.4	+1.3	+1.6	+1.0	+0.6
Top 15%	-1.0	+0.2	+22	+34	+46	+50	+7	+0.8	+27	+1.3	+1.1	+1.4	+0.8	+0.5
Top 20%	-0.8	+0.5	+21	+32	+43	+46	+6	+0.7	+26	+1.1	+0.9	+1.1	+0.7	+0.4
Top 25%	-0.6	+0.7	+20	+30	+40	+43	+6	+0.6	+24	+1.0	+0.7	+0.9	+0.5	+0.3
Top 30%	-0.5	+0.9	+19	+29	+38	+40	+6	+0.5	+23	+0.9	+0.6	+0.7	+0.4	+0.3
Top 35%	-0.3	+1.1	+18	+27	+36	+38	+5	+0.4	+22	+0.8	+0.5	+0.6	+0.3	+0.2
Top 40%	-0.2	+1.3	+17	+26	+34	+36	+5	+0.4	+21	+0.7	+0.4	+0.4	+0.2	+0.2
Top 45%	-0.1	+1.4	+16	+25	+32	+34	+5	+0.3	+20	+0.6	+0.3	+0.3	+0.1	+0.1
Top 50%	+0.0	+1.6	+15	+23	+31	+32	+4	+0.2	+19	+0.6	+0.2	+0.1	+0.0	+0.1
Top 55%	+0.2	+1.8	+14	+22	+29	+30	+4	+0.2	+18	+0.5	+0.1	+0.0	-0.1	+0.0
Top 60%	+0.3	+2.0	+13	+21	+27	+27	+4	+0.1	+17	+0.4	+0.0	-0.1	-0.2	+0.0
Top 65%	+0.4	+2.2	+12	+19	+26	+25	+4	+0.1	+16	+0.3	-0.1	-0.3	-0.3	-0.1
Top 70%	+0.5	+2.4	+11	+18	+23	+23	+3	+0.0	+14	+0.2	-0.2	-0.4	-0.4	-0.1
Top 75%	+0.7	+2.6	+10	+16	+22	+21	+3	-0.1	+13	+0.1	-0.4	-0.6	-0.6	-0.2
Top 80%	+0.8	+2.8	+9	+15	+19	+18	+3	-0.2	+11	+0.0	-0.5	-0.8	-0.7	-0.3
Top 85%	+1.0	+3.2	+8	+13	+16	+14	+2	-0.3	+10	-0.1	-0.6	-1.0	-0.9	-0.3
Top 90%	+1.3	+3.6	+6	+10	+13	+10	+2	-0.4	+8	-0.3	-0.9	-1.3	-1.1	-0.4
Top 95%	+1.7	+4.2	+4	+6	+9	+4	+1	-0.7	+5	-0.6	-1.2	-1.7	-1.4	-0.6
Top 99%	+2.5	+5.6	-1	-2	-3	-10	-1	-1.2	-3	-1.1	-1.8	-2.6	-2.0	-0.9
Low Value	+3.5	+7.5	-10	-18	-32	-47	-4	-2.7	-19	-2.1	-3.4	-4.8	-3.0	-1.5



HOW TO REGISTER with ELITE LIVESTOCK AUCTIONS



Simply go to www.elitelivestockauctions.com.au using your desktop, laptop, iPad, iPhone or android device.



Click on the **"Sign Up"** page / link



Create a bidding profile using the bidder registration page. *(You can either register as a livestock agent, company or private buyer)*



Agree to the Elite Livestock Auctions Terms & Conditions and the Selling Agents Sale Terms & Conditions as printed in the official Sale Catalogue



Click **"Register"**



You will then be notified by email that an account has been created.



Once an account has been created you are all **"Set to Bid"**



Each Auction can then be viewed by clicking **"Live Auction"** logo on the Elite Livestock Auctions website.



Once you receive email notification that your account has been created please go to the sale you wish to bid at and click **"Request to Bid"**



The sale will then approve your application to bid and on the sale catalogue you will see **"✓ Bid Request Approved"**



On Sale day simply login, click **"Enter Auction"** on the catalogue page and you can start bidding. *(There is no need for software download)*



At the completion of the auction, invoicing will be carried out as per your registration details by the Selling Agents.

Having trouble registering and logging in?

1300 259 742



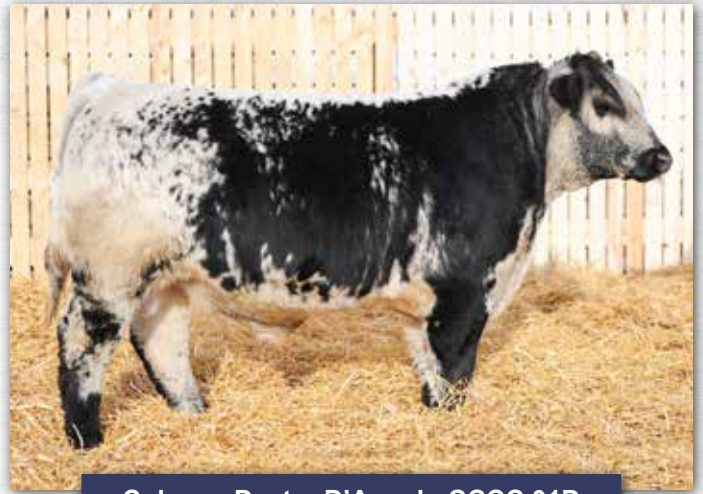
Elite Livestock Auctions ABN 19604 627 607
Level 19, 123 Eagle Street, Brisbane, QLD 4000

P : 1300 259 742 F : 07 3041 5053
www.elitelivestockauctions.com.au

Reference Sires



CN Zpotz Zazu 2Z



Colgans Dexter D'Angelo CCCC 01D



Dam Dots Electric DAM 31E



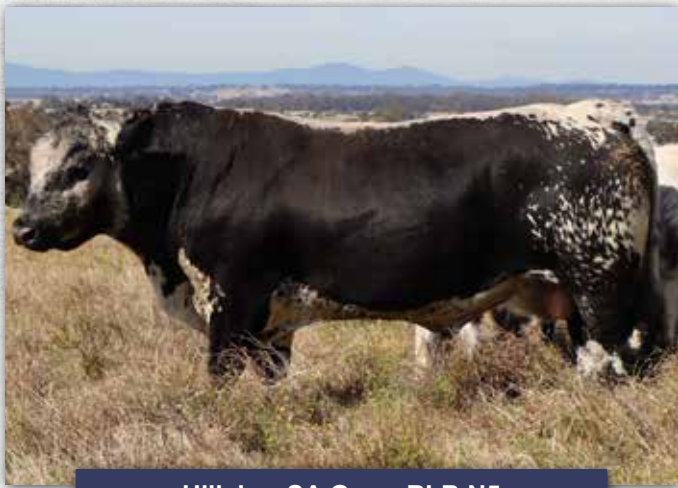
Hillview Cliff RLB Q4



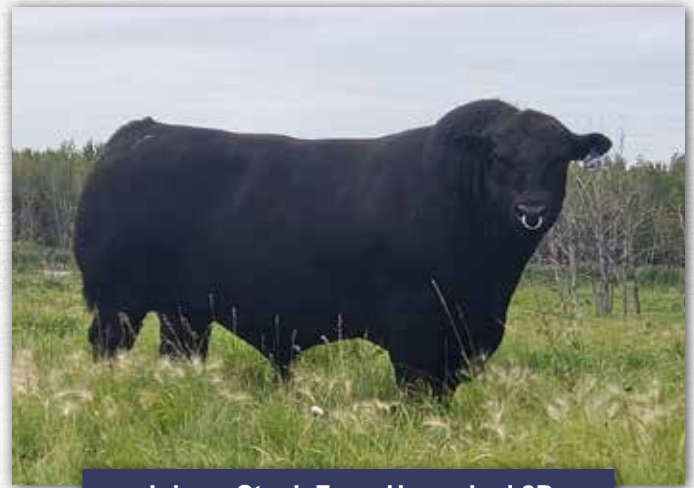
Hillview Fabian RLB Q16



Hillview Paddy RLB S58



Hillview SA Gerry RLB N5



Johner Stock Farm Unmarked 2D



MX-EI-Guapo RMS 103E



Ravenworth Invictus 103C



River Hill 60W Line Drive 54Z



Starbank Lacerta 68L



Unlimited Spots Grnwd Future 20F





Lot 1

Black & White Quilt

The only fully exportable lot in our sale. This quilt was made by Leanne and measures 205cm (81 inches) wide x 215cm (85 inches) long and fits a queen size bed. All proceeds from this lot will be donated to the National Breast Cancer Foundation and Prostate Cancer Australia.



**National
Breast Cancer
Foundation**



**Prostate Cancer
Foundation
of Australia**



Lot 2

HILLVIEW MISCHIEF

By the Canadian sire Unlimited Spots Grnwd Future 20F and out of Hillview Melanie RLB N15 a Wattlegrove Melissa daughter this bull is perfect for the producer looking for extra muscle.



Sire

RIVER HILL 26T YAGER 99Y (Leopard)
 RIVER HILL BACKGROUNDER 025B (Speckled)
 RIVER HILL 64S WHISPER 25W (P) (Leopard)
Sire: **UNLIMITEDSPOTS GRNWD FUTURE20F (Speckled)**
 P.A.R. XCALABAR 6X (P) (Speckled)
 BLACKIE RAINA OF P.A.R. 21Z (Black)
 RAINA OF P.A.R. 21R (P) (Speckled)

SEMEX ALLIANCE YOGI GOES REDNECK (Speckled)
 JOHNER STOCK FARM TRADE SECRET (White)
 MONNERY RIVER 7W (P) (Speckled)
Dam: **HILLVIEW T S MELANIE (ET) (P) (Leopard)**
 RIVER HILL 26T WALKER 60W (P) (Speckled)
 WATTLE GROVE 60W MELISSA G46 (ET) (Speckled)
 CODIAK MELISA RKW 64M (Speckled)

Ident	DOB	Type	BW	Weight
RLB S39	15/8/2021	Male	35kgs	666kgs

Colour	Horn	Poll	Coat	MSTN	Leptin
Leopard	Polled	PcPc	ED/ED	Non Carrier (Free)	T/T

GL	MILK	BW	200	400	600	MCW	SS	CWT	RUMP	EMA	RIB	IMF	RBV
-1.3	2	2.8	30	34	44	41	0.4	25	0	0.4	0	-0.3	0.3
48%	36%	67%	62%	58%	58%	44%	51%	46%	46%	36%	47%	40%	41%

August 2023 Speckle Park BREEDPLAN



Lot 3

HILLVIEW MARIO

Another of the heavily muscled, early maturing Future LAF 20 sons, we have used Mario as a mop up bull in our stud and commercial herds.



Dam

RIVER HILL 26T YAGER 99Y (Leopard)
 RIVER HILL BACKGROUND 025B (Speckled)
 RIVER HILL 64S WHISPER 25W (P) (Leopard)

Sire: **UNLIMITEDSPOTS GRNWD FUTURE20F (Speckled)**

P.A.R. XCALABAR 6X (P) (Speckled)
 BLACKIE RAINA OF P.A.R. 21Z (Black)
 RAINA OF P.A.R. 21R (P) (Speckled)

SEMEX ALLIANCE YOGI GOES REDNECK (Speckled)
 JOHNER STOCK FARM TRADE SECRET (White)
 MONNERY RIVER 7W (P) (Speckled)

Dam: **HILLVIEW T S MELANIE (ET) (P) (Leopard)**

RIVER HILL 26T WALKER 60W (P) (Speckled)
 WATTLE GROVE 60W MELISSA G46 (ET) (Speckled)
 CODIAK MELISA RKW 64M (Speckled)

Ident	DOB	Type	BW	Weight
RLB S42	15/8/2021	Male	45kgs	704kgs

Colour	Horn	Poll	Coat	MSTN	Leptin
Speckled		PcPc	ED/ED	Non Carrier (Free)	T/T

GL	MILK	BW	200	400	600	MCW	SS	CWT	RUMP	EMA	RIB	IMF	RBV
-1.8	4	1.3	24	27	35	32	0.4	23	-0.2	0.7	-0.1	-0.3	0.5
45%	34%	62%	58%	54%	54%	41%	47%	43%	43%	34%	44%	38%	39%

August 2023 Speckle Park BREEDPLAN



Lot 4

HILLVIEW PAULIE

An early maturing thick and deep soft skinned bull. Easy to work with.



Sire

RIVER HILL 50U ALL IN 60A (White)
 UNDERHILL ALL OUT 1D (P) (Speckled)
 SPOTS 'N SPROUTS 10S (P) (Speckled)

Sire: HILLVIEW FABIAN (AI) (ET) (P) (White)

STAR BANK KING GEORGE 82U (P) (Speckled)
 HILLVIEW FREEWAY F3 (AI) (ET) (White)
 STAR BANK 50J (Speckled)

SPOTS 'N SPROUTS STANDS ALONE (P) (White)
 THREE WAY GUNS & ROSES (AI) (ET) (P) (Speckled)
 THREE WAY ANGEL OF DARKNESS (P) (Black)

Dam: HILLVIEW PAIGE (P) (Leopard)

STAR BANK LACERTA 68L (Speckled)
 THREE WAY HALFPENNY H5 (AI) (ET) (P) (Leopard)
 CODIAK SHAMELESS 17L (Speckled)

Ident	DOB	Type	BW	Weight
RLB S69	8/12/2021	Male	36kgs	584kgs

Colour	Horn	Poll	Coat	MSTN	Leptin
White	Polled	PcPc	ED/ED	Non Carrier (Free)	C/C

GL	MILK	BW	200	400	600	MCW	SS	CWT	RUMP	EMA	RIB	IMF	RBV
0.8	4	2.6	17	26	38	39	0.3	23	-1.2	1.4	-0.9	-0.4	1.2
42%	34%	60%	56%	53%	53%	40%	44%	42%	44%	33%	45%	40%	40%

August 2023 Speckle Park BREEDPLAN



Lot 5

HILLVIEW MAVERICK

From our 2023 Sydney Feature Show team, where he was 3rd in his class Maverick is a smooth shouldered, black skinned bull with good feet and frame. He will be an excellent herd sire, for early maturing calves. Maverick has been lightly worked since Sydney Show.



Dam

RIVER HILL 50U ALL IN 60A (White)
 UNDERHILL ALL OUT 1D (P) (Speckled)
 SPOTS 'N SPROUTS 10S (P) (Speckled)

Sire: **HILLVIEW FABIAN (AI) (ET) (P) (White)**
 STAR BANK KING GEORGE 82U (P) (Speckled)
 HILLVIEW FREEWAY F3 (AI) (ET) (White)
 STAR BANK 50J (Speckled)

SEMEX ALLIANCE YOGI GOES REDNECK (Speckled)
 JOHNER STOCK FARM TRADE SECRET (White)
 MONNERY RIVER 7W (P) (Speckled)

Dam: **HILLVIEW T S MELANIE (ET) (P) (Leopard)**
 RIVER HILL 26T WALKER 60W (P) (Speckled)
 WATTLE GROVE 60W MELISSA G46 (ET) (Speckled)
 CODIAK MELISA RKW 64M (Speckled)

Ident	DOB	Type	BW	Weight
RLB T1	5/1/2022	Male	29kgs	536kgs

Colour	Horn	Poll	Coat	MSTN	Leptin
White	Polled	PcPc	ED/ED	Non Carrier (Free)	C/T

GL	MILK	BW	200	400	600	MCW	SS	CWT	RUMP	EMA	RIB	IMF	RBV
-1	5	1.3	16	24	31	26	0.4	20	-0.2	1.2	-0.1	-0.4	0.7
46%	39%	63%	59%	56%	56%	44%	48%	45%	46%	36%	48%	42%	42%

August 2023 Speckle Park BREEDPLAN



Lot 6

HILLVIEW CALVIN

A late maturing bull by Canadian sire Electric, Calvin is showing the thickness of his sire that impressed us in Canada in 2019 and the frame of his dam, who is one of our most fertile donor cows never failing to produce quality calves year on year.



Sire

RIVER HILL GNK 12X (Speckled)
 RIVER HILL 12X A'MAN 94A (Speckled)
 PRAIRIE HILL PASSION 94P (Speckled)
Sire: **D.A.M. DOTS 94A ELECTRIC 31E (P) (White)**
 STAR BANK LACERTA 68L (Speckled)
 NOTTA 68L LIGHTNING LADY 31X (P) (White)
 STAR BANK 54R (P) (White)

PRAIRIE HILL DURMAX 93N (Black)
 PRAIRIE HILL JOHN WAYNE 50S (P) (Speckled)
 PRAIRIE HILL NABOB 50N (Speckled)
Dam: **WATTLE GROVE 50S SALLY F3 (ET) (Black)**
 CALAMASUE 4M (Speckled)
 MOOVIN ZPOTZ SALLY 9S (P) (Speckled)
 RIVER HILL MINDY 2M (Speckled)

Ident	DOB	Type	BW	Weight
RLB T7	25/3/2022	Male	34kgs	588kgs

Colour	Horn	Poll	Coat	MSTN	Leptin
Speckled	Polled	PcPc	ED/e	Carrier	C/C

GL	MILK	BW	200	400	600	MCW	SS	CWT	RUMP	EMA	RIB	IMF	RBV
-0.3	5	1.7	19	28	35	30	0.2	22	0.3	1	0.3	0.2	0
40%	33%	61%	55%	53%	53%	42%	39%	42%	42%	32%	43%	37%	39%

August 2023 Speckle Park BREEDPLAN



Lot 7

HILLVIEW SAWYER

Sawyer is a soft early maturing bull that will add muscle and thickness to his calves. Out of Spanish Angel J167 who has left her mark in the breed.



Sire

LEGACY UNRIVALED 12U (P) (Speckled)
 CODIAK TYCOON CAT GNK 12Z (P) (Speckled)
 SPOTS AND SPROUTS 7W

Sire: **COLGAN'S DEXTER D'ANGELO 01D (P) (Speckled)**
 RIVER HILL 64S URBAN COWBOY 3U (P) (Speckled)
 SPOTS N SPROUTS 10Y (P) (White)
 SPOTS 'N SPROUTS 12U (P) (Speckled)

HWY. 4 SPECKLE PARK 2H (Speckled)
 WATTLE GROVE MOONSHINE E10 (ET) (White)
 CODIAK MINDBENDER 59M (Leopard)

Dam: **WARATAH F15 SPANISH ANGEL J167 (AI) (ET) (P) (Leopard)**
 STAR BANK KING GEORGE 82U (P) (Speckled)
 WARATAH SPANISH ANGEL (ET) (P) (Black)
 RIVER HILL SPANISH ANGEL 5S (P) (Black)

Ident	DOB	Type	BW	Weight
RLB T9	2/5/2022	Male	33kgs	548kgs

Colour	Horn	Poll	Coat	MSTN	Leptin
Leopard	Polled	PcPc	ED/e	Non Carrier (Free)	C/C

GL	MILK	BW	200	400	600	MCW	SS	CWT	RUMP	EMA	RIB	IMF	RBV
-1.2	4	0.5	14	21	24	22	0.7	18	-0.2	0.9	-0.1	-0.2	0.5
50%	35%	68%	64%	60%	59%	46%	53%	47%	46%	36%	47%	40%	41%

August 2023 Speckle Park BREEDPLAN



Lot 8

HILLVIEW CARLOS

Quiet early maturing sire plenty to admire about him, good for stud or commercial use.



Sire

Sire: **MX EL GUAPO 103E (P) (Speckled)**

PAR ACE IN A HOLE 66A (Speckled)
P.A.R. CASANOVA 55C (P) (Speckled)
POPPY OF P.A.R. 55P (Leopard)

P.A.R. THROTTLE 66T (P) (Speckled)
P.A.R. HIGH MAINTENANCE OF MX 103Z (P) (Speckled)
SPECIAL DESIGN OF P.A.R. 20S (P) (Speckled)

Dam: **WATTLE GROVE 50S SALLY F3 (ET) (Black)**

PRAIRIE HILL DURMAX 93N (Black)
PRAIRIE HILL JOHN WAYNE 50S (P) (Speckled)
PRAIRIE HILL NABOB 50N (Speckled)

CALAMASUE 4M (Speckled)
MOOVIN ZPOTZ SALLY 9S (P) (Speckled)
RIVER HILL MINDY 2M (Speckled)

Ident	DOB	Type	BW	Weight
RLB T10	2/5/2022	Male	35kgs	556kgs

Colour	Horn	Poll	Coat	MSTN	Leptin
Speckled	Polled	PcPc	ED/ED	Non Carrier (Free)	C/C

GL	MILK	BW	200	400	600	MCW	SS	CWT	RUMP	EMA	RIB	IMF	RBV
0.2	3	3.2	24	33	47	49	0.6	26	0.1	1.2	0.1	0.1	0.3
45%	30%	65%	61%	59%	59%	47%	52%	48%	49%	37%	49%	44%	45%

August 2023 Speckle Park BREEDPLAN



Lot 9

HILLVIEW SAM

Another of our Sydney 2023 team, Sam is a young early maturing sire ideal for the vealer market.



Sire

STAR BANK 64R RIO 6W (P) (Speckled)
 RAVENWORTH KLEOS 3Y (P) (Speckled)
 STAR BANK TUCANA 38T (P) (Speckled)

Sire: **RAVENWORTH INVICTUS 103C (P) (Speckled)**

SPOTS 'N SPROUTS STANDS ALONE (P) (White)
 RAVENWORTH NORTHERN STAR 101A (P) (Speckled)
 STAR BANK NIGHTGLOW 46N (Black)

HWY. 4 SPECKLE PARK 2H (Speckled)
 WATTLE GROVE MOONSHINE E10 (ET) (White)
 CODIAK MINDBENDER 59M (Leopard)

Dam: **WARATAH F15 SPANISH ANGEL J167 (AI) (ET) (P) (Leopard)**

STAR BANK KING GEORGE 82U (P) (Speckled)
 WARATAH SPANISH ANGEL (ET) (P) (Black)
 RIVER HILL SPANISH ANGEL 5S (P) (Black)

Ident	DOB	Type	BW	Weight
RLB T12	5/5/2022	Male	32kgs	592kgs

Colour	Horn	Poll	Coat	MSTN	Leptin
Speckled	Polled	PcPc	ED/ED	Non Carrier (Free)	C/C

GL	MILK	BW	200	400	600	MCW	SS	CWT	RUMP	EMA	RIB	IMF	RBV
-0.1	4	1.3	17	26	35	42	0.3	24	0.5	0.9	0.4	0	0.2
49%	39%	74%	69%	63%	63%	51%	57%	51%	51%	40%	52%	46%	47%

August 2023 Speckle Park BREEDPLAN



Lot 10

HILLVIEW SETH

A full flush brother to the previous lot, Seth is a bull who will breed good calves in any herd.



Dam

STAR BANK 64R RIO 6W (P) (Speckled)
 RAVENWORTH KLEOS 3Y (P) (Speckled)
 STAR BANK TUCANA 38T (P) (Speckled)

Sire: **RAVENWORTH INVICTUS 103C (P) (Speckled)**

SPOTS 'N SPROUTS STANDS ALONE (P) (White)
 RAVENWORTH NORTHERN STAR 101A (P) (Speckled)
 STAR BANK NIGHTGLOW 46N (Black)

HWY. 4 SPECKLE PARK 2H (Speckled)
 WATTLE GROVE MOONSHINE E10 (ET) (White)
 CODIAK MINDBENDER 59M (Leopard)

Dam: **WARATAH F15 SPANISH ANGEL J167 (AI) (ET) (P) (Leopard)**

STAR BANK KING GEORGE 82U (P) (Speckled)
 WARATAH SPANISH ANGEL (ET) (P) (Black)
 RIVER HILL SPANISH ANGEL 5S (P) (Black)

Ident	DOB	Type	BW	Weight
RLB T13	5/5/2022	Male	33kgs	437kgs

Colour	Horn	Poll	Coat	MSTN	Leptin
Speckled	Polled	PcPc	ED/ED	Non Carrier (Free)	C/C

GL	MILK	BW	200	400	600	MCW	SS	CWT	RUMP	EMA	RIB	IMF	RBV
0.9	5	2.5	22	31	44	53	0.4	28	0.3	1	0.3	0	0.3
49%	39%	69%	66%	62%	62%	51%	57%	51%	50%	40%	51%	45%	46%

August 2023 Speckle Park BREEDPLAN



Lot 11

HILLVIEW QUINN

A bull from the proven Mt Eccles Queen Alone family. Don't miss this opportunity to secure for your herd the hard to find genetics from this great family.



Grand Sire

C.A.M.Y. TORQUE 03T (P) (Speckled)
 CODIAK GNK 24X (P) (Speckled)
 CODIAK URSULA GNK 3U (P) (Speckled)
Sire: **REMIN'S PROUD MOMENTS 54C (P) (White)**
 P.A.R. KING PIN 1K (Speckled)
 REMIN'S PRIDE 6T (P) (Speckled)
 REMIN'S PRIDE 6N (Speckled)

STYALS LIGHTNING LADD 14P (P) (Speckled)
 SPOTS 'N SPROUTS STANDS ALONE (P) (White)
 SPOTS 'N SPROUTS 2R (P) (Speckled)
Dam: **MT ECCLES QUEEN ALONE (AI) (ET) (Speckled)**
 HWY. 4 SPECKLE PARK 2H (Speckled)
 WARATAH E25 (ET) (P) (Black)
 PRAIRIE HILL AMY'S GIRL 21K (Speckled)

Ident	DOB	Type	BW	Weight
RLB T15	5/5/2022	Male	34kgs	478kgs

Colour	Horn	Poll	Coat	MSTN	Leptin
Speckled	Polled	HPc	ED/ED	Non Carrier (Free)	C/T

GL	MILK	BW	200	400	600	MCW	SS	CWT	RUMP	EMA	RIB	IMF	RBV
1.1	3	2.8	16	25	36	41	0.4	17	-0.5	-0.2	-0.3	0.2	-0.2
51%	46%	69%	65%	62%	62%	50%	53%	50%	49%	40%	50%	45%	45%

August 2023 Speckle Park BREEDPLAN



Lot 12

HILLVIEW GEORGE

The youngest bull in our draft George is thick all the way through with good scrotal size for his age.



Sire

RIVER HILL 50U ALL IN 60A (White)
 UNDERHILL ALL OUT 1D (P) (Speckled)
 SPOTS 'N SPROUTS 10S (P) (Speckled)
Sire: **HILLVIEW FABIAN (AI) (ET) (P) (White)**
 STAR BANK KING GEORGE 82U (P) (Speckled)
 HILLVIEW FREEWAY F3 (AI) (ET) (White)
 STAR BANK 50J (Speckled)

STAR BANK LACERTA 68L (Speckled)
 WATTLE GROVE MR BUSINESS E11 (ET) (Speckled)
 MOOVIN ZPOTZ SUNSHINE 5S (P) (Speckled)
Dam: **HILLVIEW MISS GEORGIE (AI) (ET) (P) (Speckled)**
 RIVER HILL 26T WALKER 60W (P) (Speckled)
 CHECKERED GEORGIE GIRL (AI) (ET) (P) (White)
 ASPEN ACRES KOLOR ME KATE 10K (Leopard)

Ident	DOB	Type	BW	Weight
RLB T26	11/6/2022	Male	30kgs	419kgs

Colour	Horn	Poll	Coat	MSTN	Leptin
Speckled	Polled	PcPc	ED/ED	Carrier	C/C

GL	MILK	BW	200	400	600	MCW	SS	CWT	RUMP	EMA	RIB	IMF	RBV
1	4	3.2	19	30	42	41	0.2	26	-0.5	2.2	-0.3	-0.4	1.1
43%	35%	62%	57%	54%	54%	41%	45%	42%	44%	33%	45%	40%	39%

August 2023 Speckle Park BREEDPLAN



Lot 13

HILLVIEW KAITLYN

From one of our foundation females, this lovely young cow would be an asset to any herd. Kaitlyn sells with a bull calf at foot sired by Hillview Samuel RLB S2 born 27.07.23



Sire

LEGACY ROUGHRIDER 52R (P) (Speckled)
LEGACY TURNPIKE CRUISER 27T (P) (Leopard)
LEGACY ROMA 60R (P) (Speckled)

Sire: **CN ZPOTZ ZAZU 2Z (Speckled)**

PRAIRIE HILL MASTERPLAN II 87L (Speckled)
PRAIRIE HILL NIRVANA 4N (Speckled)
PRAIRIE HILL 1H (Speckled)

RAVEN MEADOWS MAGNUM 10N (Speckled)
CODIAK CRIKEY GNK 13U (P) (Speckled)
CODIAK RKW 07J (Speckled)

Dam: **CHECKERED FELICITY (ET) (P) (Leopard)**

SPOTS 'N SPROUTS JUNO 103J (Speckled)
STAR BANK 99M (Speckled)
STAR BANK 11H (Speckled)

Ident	DOB	Type	BW	Weight
RLB P31	5/9/2018	Female	34kgs	594kgs

Colour	Horn	Poll	Coat	MSTN	Leptin
Speckled	Polled	PcPc	ED/ED	Non Carrier (Free)	C/T

GL	MILK	BW	200	400	600	MCW	SS	CWT	RUMP	EMA	RIB	IMF	RBV
0.4	0	0.8	6	7	11	16	1.1	1	1.8	-1.2	1.4	0.6	-1.7
52%	44%	73%	63%	60%	61%	50%	55%	49%	50%	40%	51%	44%	46%

August 2023 Speckle Park BREEDPLAN



Lot 14

HILLVIEW LEILA

Don't look past this lovely feminine black heifer.

Leila is by the great Lacerta and out of one of the most structurally correct high milking females in our herd AAA Little Lady a daughter of the great Putnam. Leila's sister Layla was the top priced animal at the 2021 Scone Speckle Park Sale. Paddock mated to Hillview Fabian RLB Q16 from 31.10.22, Leila will have a calf at foot by sale day.



Sire

Sire: **STAR BANK LACERTA 68L (Speckled)**

P.A.R. GREAT WESTERN 11F
 SPOTS 'N SPROUTS JUNO 103J (Speckled)
 SPOTS 'N SPROUTS 6A
 NORALTA 9E
 STAR BANK 55H (Speckled)
 STAR BANK 43F

Dam: **AAA LITTLE LADY M4 (AI) (ET) (Speckled)**

CODIAK OSCAR GNK 8S (P) (Leopard)
 CODIAK PUTNAM GNK 61Y (P) (Leopard)
 NORTHERN LIGHTS 14N (White)
 STAR BANK KING GEORGE 82U (P) (Speckled)
 82U LIGHTNING LADY G61 (ET) (Speckled)
 STAR BANK 5P (Speckled)

Ident	DOB	Type	BW	Weight
RLB S11	4/4/2021	Female	31kgs	518kgs

Colour	Horn	Poll	Coat	MSTN	Leptin
Black	Scurred	HPc	ED/ED	Carrier	C/C

GL	MILK	BW	200	400	600	MCW	SS	CWT	RUMP	EMA	RIB	IMF	RBV
0.2	9	-0.3	8	18	20	16	0	20	-0.3	1.1	-0.2	-0.4	0.6
58%	58%	69%	67%	64%	64%	56%	60%	57%	57%	50%	58%	54%	54%

August 2023 Speckle Park BREEDPLAN



Lot 15

HILLVIEW ALICE

A lovely young cow in the making with a packed pedigree behind her that includes such greats as Stands Alone and Melisa G34 . Paddock mated to Hillview Fabian RLB Q16 from 31.10.22, Alice will have a calf at foot by sale day.



Grand Sire

STYALS LIGHTNING LADD 14P (P) (Speckled)
 SPOTS 'N SPROUTS STANDS ALONE (P) (White)
 SPOTS 'N SPROUTS 2R (P) (Speckled)
Sire: **THREE WAY GUNS & ROSES (AI) (ET) (P) (Speckled)**
 BUNDERRA 26T CROSS OVER F11 (ET) (Speckled)
 THREE WAY ANGEL OF DARKNESS (P) (Black)
 BUNDERRA 68L STAR BANK E20 (ET) (Speckled)

LEGACY UNRIVALED 12U (P) (Speckled)
 CODIAK AMIGO GNK 65Y (P) (White)
 CODIAK GNK 24T (P) (Leopard)
Dam: **HILLVIEW AMY (AI) (ET) (P) (Speckled)**
 CODIAK CRIKEY GNK 13U (P) (Speckled)
 WARATAH MELISA G34 (ET) (Speckled)
 CODIAK MELISA RKW 64M (Speckled)

Ident	DOB	Type	BW	Weight
RLB S16	2/4/2021	Female	32kgs	526kgs

Colour	Horn	Poll	Coat	MSTN	Leptin
Speckled		PcPc	ED/ED	Non Carrier (Free)	C/C

GL	MILK	BW	200	400	600	MCW	SS	CWT	RUMP	EMA	RIB	IMF	RBV
0.1	4	0.9	10	16	21	22	0.3	12	0.3	0	0.2	0	-0.3
46%	43%	62%	57%	53%	54%	43%	48%	43%	44%	35%	45%	39%	39%

August 2023 Speckle Park BREEDPLAN



Lot 16

HILLVIEW DEMI

Yet another pedigree packed with quality; including White Acres Katie, Putnam and John Wayne Demi is hard to part with. Paddock mated to Hillview Fabian RLB Q16 from 31.10.22, Demi will have a calf at foot by sale day.



Sire

Sire: CODIAK PUTNAM GNK 61Y (P) (Leopard)
 WATTLE GROVE BORN READY L269 (AI) (ET) (P) (White)
 CODIAK GOOD GOLLY GNK 11U (P) (Speckled)
HILLVIEW CLIFF (AI) (ET) (P) (Speckled)
 PRAIRIE HILL JOHN WAYNE 50S (P) (Speckled)
 WATTLE GROVE 50S SALLY F3 (ET) (Black)
 MOOVIN ZPOTZ SALLY 9S (P) (Speckled)

Dam: STAR BANK LACERTA 68L (Speckled)
 WATTLE GROVE MR BUSINESS E11 (ET) (Speckled)
 MOOVIN ZPOTZ SUNSHINE 5S (P) (Speckled)
HILLVIEW DIANNE (AI) (ET) (P) (Speckled)
 CODIAK PUTNAM GNK 61Y (P) (Leopard)
 WHITE ACRES KATIE (AI) (ET) (P) (White)
 WATTLE GROVE SPARKLE E31 (ET) (Speckled)

Ident	DOB	Type	BW	Weight
RLB S21	3/6/2021	Female	30kgs	518kgs

Colour	Horn	Poll	Coat	MSTN	Leptin
Leopard	Polled	PcPc	ED/ED	Non Carrier (Free)	C/T

GL	MILK	BW	200	400	600	MCW	SS	CWT	RUMP	EMA	RIB	IMF	RBV
-0.3	5	1.7	16	25	30	29	-0.2	19	-0.5	0.3	-0.3	-0.3	0.4
42%	39%	65%	57%	53%	53%	40%	46%	41%	43%	33%	44%	39%	38%

August 2023 Speckle Park BREEDPLAN



Lot 17

HILLVIEW CHRISSY

A heifer we think a great deal of, who will go on to make a future brood cow. Paddock mated to Hillview Paddy RLB S58 on 14.05.23. Backed up to VSP T26 from 27.07.23



Sire

RIVER HILL TRAFFIC JAM 26T (P) (Speckled)
 RIVER HILL 26T WALKER 60W (P) (Speckled)
 RIVER HILL SHOW ME OFF 60S (P) (Speckled)
Sire: **RIVER HILL 60W LINE DRIVE 54Z (AI) (Leopard)**
 STAR BANK LACERTA 68L (Speckled)
 NOTTA PHO-FINISH 54P (Speckled)
 STAR BANK LEONID NIGHT 54L (Speckled)

CODIAK PUTNAM GNK 61Y (P) (Leopard)
 WATTLE GROVE BORN READY L269 (AI) (ET) (P) (White)
 CODIAK GOOD GOLLY GNK 11U (P) (Speckled)
Dam: **HILLVIEW CLAUDIA (AI) (ET) (P) (Speckled)**
 PRAIRIE HILL JOHN WAYNE 50S (P) (Speckled)
 WATTLE GROVE 50S SALLY F3 (ET) (Black)
 MOOVIN ZPOTZ SALLY 9S (P) (Speckled)

Ident	DOB	Type	BW	Weight
RLB S23	27/7/2021	Female	30kgs	512kgs

Colour	Horn	Poll	Coat	MSTN	Leptin
Speckled	Polled	PcPc	ED/ED	Non Carrier (Free)	C/T

GL	MILK	BW	200	400	600	MCW	SS	CWT	RUMP	EMA	RIB	IMF	RBV
0.5	8	2.9	22	31	44	42	0.1	25	-0.1	0.9	0	0.2	0.1
53%	50%	67%	64%	61%	61%	51%	57%	52%	53%	45%	54%	49%	50%

August 2023 Speckle Park BREEDPLAN



Lot 18

HILLVIEW MORGAN

This is a heifer that has a great future ahead of her. Her dam is certainly leaving her mark in our herd with progeny ribbon winners at 2023 Sydney Feature Show. Morgan is a full sister to Lots 2,3 and 21. Paddock mated to Hillview Fabian RLB Q16 on 19.02.23



Sire

RIVER HILL 26T YAGER 99Y (Leopard)
 RIVER HILL BACKGROUNDER 025B (Speckled)
 RIVER HILL 64S WHISPER 25W (P) (Leopard)
Sire: **UNLIMITEDSPOTS GRNWD FUTURE20F (Speckled)**
 P.A.R. XCALABAR 6X (P) (Speckled)
 BLACKIE RAINA OF P.A.R. 21Z (Black)
 RAINA OF P.A.R. 21R (P) (Speckled)

SEMEX ALLIANCE YOGI GOES REDNECK (Speckled)
 JOHNER STOCK FARM TRADE SECRET (White)
 MONNERY RIVER 7W (P) (Speckled)
Dam: **HILLVIEW T S MELANIE (ET) (P) (Leopard)**
 RIVER HILL 26T WALKER 60W (P) (Speckled)
 WATTLE GROVE 60W MELISSA G46 (ET) (Speckled)
 CODIAK MELISA RKW 64M (Speckled)

Ident	DOB	Type	BW	Weight
RLB S24	7/8/2021	Female	30kgs	500kgs

Colour	Horn	Poll	Coat	MSTN	Leptin
Leopard		PcPc	ED/ED	Non Carrier (Free)	T/T

GL	MILK	BW	200	400	600	MCW	SS	CWT	RUMP	EMA	RIB	IMF	RBV
-1.8	4	1.3	24	27	35	32	0.4	23	-0.2	0.7	-0.1	-0.3	0.5
45%	34%	62%	58%	54%	54%	41%	47%	43%	43%	34%	44%	38%	39%

August 2023 Speckle Park BREEDPLAN



Lot 19

HILLVIEW QUEST

This is a heifer out of the proven Mt Eccles Queen Alone family with plenty of milk and structurally correct will make a great female in any program. Don't miss this opportunity to secure a great family. Paddock mated to Hillview Paddy RLB S58 on 14.05.23. Backed up to VSP T26 from 27.07.23



Hillview Paddy

C.A.M.Y. TORQUE 03T (P) (Speckled)
 CODIAK GNK 24X (P) (Speckled)
 CODIAK URSULA GNK 3U (P) (Speckled)
Sire: **REMIN'S PROUD MOMENTS 54C (P) (White)**
 P.A.R. KING PIN 1K (Speckled)
 REMIN'S PRIDE 6T (P) (Speckled)
 REMIN'S PRIDE 6N (Speckled)

STYALS LIGHTNING LADD 14P (P) (Speckled)
 SPOTS 'N SPROUTS STANDS ALONE (P) (White)
 SPOTS 'N SPROUTS 2R (P) (Speckled)
Dam: **MT ECCLES QUEEN ALONE (AI) (ET) (Speckled)**
 HWY. 4 SPECKLE PARK 2H (Speckled)
 WARATAH E25 (ET) (P) (Black)
 PRAIRIE HILL AMY'S GIRL 21K (Speckled)

Ident	DOB	Type	BW	Weight
RLB S27	11/8/2021	Female	32kgs	486kgs

Colour	Horn	Poll	Coat	MSTN	Leptin
Leopard	Polled	HPc	ED/E+	Non Carrier (Free)	C/T

GL	MILK	BW	200	400	600	MCW	SS	CWT	RUMP	EMA	RIB	IMF	RBV
0.8	3	2.7	18	28	39	44	0.4	20	-1.2	-0.2	-0.8	0.1	0.2
50%	45%	66%	63%	60%	60%	49%	52%	49%	48%	39%	49%	44%	44%

August 2023 Speckle Park BREEDPLAN



Lot 20

HILLVIEW FALLYN

From the heart of the Hillview herd this daughter of herd matriach Freeway is a thick, deep moderately framed female. Fallyn would be an asset to anyone in the breed, at 13 her dam is still a productive cow that made her show debut at Sydney Royal in 2021 as an 11 year old. Paddock mated to Victorian E11 Eldorado T26 on 14.05.23



Dam

A & W 15R (P) (Leopard)
 HS UNTAPPED 3A (Speckled)
 NOTTA 2R PRETENDER 4T (P) (Speckled)
Sire: **JOHNER STOCK FARM UNMARKED 2D (P) (Black)**
 UPTO SPECS ULYSSES 25U (P) (Speckled)
 JENCREST YAVONNA 6Y (P) (Speckled)
 RITA OF P.A.R. 14R (P) (Speckled)

SPOTS 'N SPROUTS NEFROM 101N (Speckled)
 STAR BANK KING GEORGE 82U (P) (Speckled)
 STAR BANK 11H (Speckled)
Dam: **HILLVIEW FREEWAY F3 (AI) (ET) (White)**
 HWY. 4 SPECKLE PARK 20G (Speckled)
 STAR BANK 50J (Speckled)
 STAR BANK 68G (Speckled)

Ident	DOB	Type	BW	Weight
RLB S30	11/8/2021	Female	32kgs	447kgs

Colour	Horn	Poll	Coat	MSTN	Leptin
Speckled		PcPc	ED/ED	Non Carrier (Free)	C/C

GL	MILK	BW	200	400	600	MCW	SS	CWT	RUMP	EMA	RIB	IMF	RBV
1.3	1	1.1	9	13	16	15	0.3	10	1.6	0.6	1.2	0.3	-0.8
54%	42%	66%	63%	61%	61%	50%	56%	52%	53%	43%	54%	49%	50%

August 2023 Speckle Park BREEDPLAN



Lot 21

HILLVIEW MARIAH

Moderate framed quiet heifer. Her dam is certainly leaving her mark in our herd with progeny ribbon winners at 2023 Sydney Feature Show. Mariah is a full sister to Lots 2,3 and 18. Paddock mated to Hillview Fabian RLB Q16 on 19.02.23



Dam

RIVER HILL 26T YAGER 99Y (Leopard)
 RIVER HILL BACKGROUND 025B (Speckled)
 RIVER HILL 64S WHISPER 25W (P) (Leopard)
Sire: **UNLIMITEDSPOTS GRNWD FUTURE20F (Speckled)**
 P.A.R. XCALABAR 6X (P) (Speckled)
 BLACKIE RAINA OF P.A.R. 21Z (Black)
 RAINA OF P.A.R. 21R (P) (Speckled)

SEMEX ALLIANCE YOGI GOES REDNECK (Speckled)
 JOHNER STOCK FARM TRADE SECRET (White)
 MONNERY RIVER 7W (P) (Speckled)
Dam: **HILLVIEW T S MELANIE (ET) (P) (Leopard)**
 RIVER HILL 26T WALKER 60W (P) (Speckled)
 WATTLE GROVE 60W MELISSA G46 (ET) (Speckled)
 CODIAK MELISA RKW 64M (Speckled)

Ident	DOB	Type	BW	Weight
RLB S31	11/8/2021	Female	35kgs	528kgs

Colour	Horn	Poll	Coat	MSTN	Leptin
White		PcPc	ED/ED	Non Carrier (Free)	T/T

GL	MILK	BW	200	400	600	MCW	SS	CWT	RUMP	EMA	RIB	IMF	RBV
-1.8	4	1.3	24	27	35	32	0.4	23	-0.2	0.7	-0.1	-0.3	0.5
45%	34%	62%	58%	54%	54%	41%	47%	43%	43%	34%	44%	38%	39%

August 2023 Speckle Park BREEDPLAN



Lot 22

HILLVIEW KATE

You have to admire the length and depth of this heifer. Paddock mated to Victorian E11 Eldorado T26 on 14.05.23



Sire

STYALS LIGHTNING LADD 14P (P) (Speckled)
 SPOTS 'N SPROUTS STANDS ALONE (P) (White)
 SPOTS 'N SPROUTS 2R (P) (Speckled)

Sire: HILLVIEW S A GERRY (ET) (P) (Speckled)

RIVER HILL 26T WALKER 60W (P) (Speckled)
 THREE WAY GRACELANDS (AI) (ET) (P) (Speckled)
 CODIAK UNIQUE GNK 8R (P) (Speckled)

LEGACY TURNPIKE CRUISER 27T (P) (Leopard)
 CN ZPOTZ ZAZU 2Z (Speckled)
 PRAIRIE HILL NIRVANA 4N (Speckled)

Dam: HILLVIEW KEIRA (AI) (ET) (P) (Speckled)

CODIAK CRIKEY GNK 13U (P) (Speckled)
 CHECKERED FELICITY (ET) (P) (Leopard)
 STAR BANK 99M (Speckled)

Ident	DOB	Type	BW	Weight
RLB S46	6/9/2021	Female	33kgs	481kgs

Colour	Horn	Poll	Coat	MSTN	Leptin
Leopard	Polled	PcPc	ED/e	Non Carrier (Free)	C/T

GL	MILK	BW	200	400	600	MCW	SS	CWT	RUMP	EMA	RIB	IMF	RBV
0.2	3	3.4	26	39	55	66	1	31	-0.3	0.4	-0.2	0.4	-0.1
46%	43%	70%	62%	64%	61%	47%	49%	53%	58%	42%	59%	51%	54%

August 2023 Speckle Park BREEDPLAN



Lot 23

HILLVIEW COLLEEN

A quiet easy to handle female with longevity and fertility from her grand dam Wattle Grove 50S Sally F3 who has just calved as a 13 year old. Paddock mated to Victorian E11 Eldorado T26 on 14.05.23



Sire

RIVER HILL 50U ALL IN 60A (White)
 UNDERHILL ALL OUT 1D (P) (Speckled)
 SPOTS 'N SPROUTS 10S (P) (Speckled)

Sire: HILLVIEW FABIAN (AI) (ET) (P) (White)

STAR BANK KING GEORGE 82U (P) (Speckled)
 HILLVIEW FREEWAY F3 (AI) (ET) (White)
 STAR BANK 50J (Speckled)

CODIAK PUTNAM GNK 61Y (P) (Leopard)
 WATTLE GROVE BORN READY L269 (AI) (ET) (P) (White)
 CODIAK GOOD GOLLY GNK 11U (P) (Speckled)

Dam: HILLVIEW CONNIE (AI) (ET) (P) (Speckled)

PRAIRIE HILL JOHN WAYNE 50S (P) (Speckled)
 WATTLE GROVE 50S SALLY F3 (ET) (Black)
 MOOVIN ZPOTZ SALLY 9S (P) (Speckled)

Ident	DOB	Type	BW	Weight
RLB S51	16/9/2021	Female	34kgs	421kgs

Colour	Horn	Poll	Coat	MSTN	Leptin
Speckled		PcPc	ED/ED	Carrier	C/C

GL	MILK	BW	200	400	600	MCW	SS	CWT	RUMP	EMA	RIB	IMF	RBV
0.4	6	1.2	10	15	25	23	0.3	17	0.1	1.9	0.1	-0.2	0.8
42%	34%	69%	60%	63%	59%	44%	44%	50%	57%	38%	57%	49%	52%

August 2023 Speckle Park BREEDPLAN



Lot 24

HILLVIEW TRINITY

5 Straws

A stylish heifer out of the great Teeka family with All Out and Freeway on the sire will make a powerful female. Paddock mated to Victorian E11 Eldorado T26 on 14.05.23



Sire

RIVER HILL 50U ALL IN 60A (White)
 UNDERHILL ALL OUT 1D (P) (Speckled)
 SPOTS 'N SPROUTS 10S (P) (Speckled)

Sire: HILLVIEW FABIAN (AI) (ET) (P) (White)

STAR BANK KING GEORGE 82U (P) (Speckled)
 HILLVIEW FREEWAY F3 (AI) (ET) (White)
 STAR BANK 50J (Speckled)

LEGACY UNRIVALED 12U (P) (Speckled)
 CODIAK AMIGO GNK 65Y (P) (White)
 CODIAK GNK 24T (P) (Leopard)

Dam: LINAUBIN TINA N1 (AI) (Speckled)

WATTLE GROVE ALMIGHTY E41 (ET) (Speckled)
 WARATAH WARATAH TEEKA J151 (AI) (ET) (P) (Black)
 WATTLE GROVE 50S TEEKA G23 (ET) (Speckled)

Ident	DOB	Type	BW	Weight
RLB S52	11/10/2021	Female	30kgs	453kgs

Colour	Horn	Poll	Coat	MSTN	Leptin
White	Polled	PcPc	ED/ED	Non Carrier (Free)	C/C

GL	MILK	BW	200	400	600	MCW	SS	CWT	RUMP	EMA	RIB	IMF	RBV
-0.1	5	0.4	9	23	31	31	0.4	21	-0.7	0.9	-0.5	-0.2	0.4
44%	35%	70%	61%	64%	60%	45%	45%	51%	57%	38%	57%	48%	52%

August 2023 Speckle Park BREEDPLAN



Lot 25 HILLVIEW ELIZA

Moderate framed heifer with length and thickness. Paddock mated to Victorian E11 Eldorado T26 on 14.05.23



Sire

STYALS LIGHTNING LADD 14P (P) (Speckled)
 SPOTS 'N SPROUTS STANDS ALONE (P) (White)
 SPOTS 'N SPROUTS 2R (P) (Speckled)

Sire: HILLVIEW S A GERRY (ET) (P) (Speckled)

RIVER HILL 26T WALKER 60W (P) (Speckled)
 THREE WAY GRACELANDS (AI) (ET) (P) (Speckled)
 CODIAK UNIQUE GNK 8R (P) (Speckled)

A & W JOEY 55P (Speckled)
 RIVER HILL TRAFFIC JAM 26T (P) (Speckled)
 CALAMASUE 26R (P) (Speckled)

Dam: CHECKERED FANCYFEET (ET) (P) (White)

NORALTA 9E
 SPOTS 'N SPROUTS 7K (Speckled)
 SPOTS 'N SPROUTS 6A

Ident	DOB	Type	BW	Weight
RLB S54	14/10/2021	Female	31kgs	420kgs

Colour	Horn	Poll	Coat	MSTN	Leptin
Speckled	Polled	PcPc	ED/ED	Non Carrier (Free)	C/T

GL	MILK	BW	200	400	600	MCW	SS	CWT	RUMP	EMA	RIB	IMF	RBV
0.5	6	1.1	12	19	28	28	0.3	19	1.1	1.6	0.9	0.5	-0.2
48%	45%	71%	63%	65%	62%	49%	50%	54%	59%	43%	60%	52%	55%

August 2023 Speckle Park BREEDPLAN



Lot 26

HILLVIEW KELLIE

Moderate framed feminine heifer.
 Paddock mated to Hillview Paddy RLB
 S58 on 14.05.23. Backed up to VSP
 T26 from 27.07.23



Sire

Sire:

RIVER HILL 50U ALL IN 60A (White)
 UNDERHILL ALL OUT 1D (P) (Speckled)
 SPOTS 'N SPROUTS 10S (P) (Speckled)
HILLVIEW FABIAN (AI) (ET) (P) (White)
 STAR BANK KING GEORGE 82U (P) (Speckled)
 HILLVIEW FREEWAY F3 (AI) (ET) (White)
 STAR BANK 50J (Speckled)

Dam:

REDNECK WILD WILLY 2W (AI) (P) (Speckled)
 SEMEX ALLIANCE YOGI GOES REDNECK (Speckled)
 ASPEN ACRES LINDA LOU 10L (Speckled)
HILLVIEW KENDALL (ET) (P) (Black)
 CODIAK CRIKEY GNK 13U (P) (Speckled)
 CHECKERED FELICITY (ET) (P) (Leopard)
 STAR BANK 99M (Speckled)

Ident	DOB	Type	BW	Weight
RLB S57	18/10/2021	Female	30kgs	388kgs

Colour	Horn	Poll	Coat	MSTN	Leptin
Speckled	Polled	PcPc	ED/ED	Non Carrier (Free)	C/C

GL	MILK	BW	200	400	600	MCW	SS	CWT	RUMP	EMA	RIB	IMF	RBV
0.2	1	0.6	5	11	18	18	0.1	10	-0.3	0.6	-0.2	-0.6	0.5
44%	34%	68%	61%	64%	59%	44%	45%	51%	57%	38%	57%	49%	52%

August 2023 Speckle Park BREEDPLAN



Lot 27

HILLVIEW MANDY

A pedigree with some of our best. A quiet thick heifer. Her dam and sire were regulars on our early show teams winning many Champion ribbons between them. Paddock mated to Victorian E11 Eldorado T26 on 14.05.23



Sire

STYALS LIGHTNING LADD 14P (P) (Speckled)
 SPOTS 'N SPROUTS STANDS ALONE (P) (White)
 SPOTS 'N SPROUTS 2R (P) (Speckled)

Sire: **HILLVIEW S A GERRY (ET) (P) (Speckled)**

RIVER HILL 26T WALKER 60W (P) (Speckled)
 THREE WAY GRACELANDS (AI) (ET) (P) (Speckled)
 CODIAK UNIQUE GNK 8R (P) (Speckled)

SEMEX ALLIANCE YOGI GOES REDNECK (Speckled)
 JOHNER STOCK FARM TRADE SECRET (White)
 MONNERY RIVER 7W (P) (Speckled)

Dam: **HILLVIEW T S MAKAYLA (ET) (P) (Leopard)**

RIVER HILL 26T WALKER 60W (P) (Speckled)
 WATTLE GROVE 60W MELISSA G46 (ET) (Speckled)
 CODIAK MELISA RKW 64M (Speckled)

Ident	DOB	Type	BW	Weight
RLB S59	30/10/2021	Female	34kgs	445kgs

Colour	Horn	Poll	Coat	MSTN	Leptin
White	Polled	PcPc	ED/ED	Carrier	C/T

GL	MILK	BW	200	400	600	MCW	SS	CWT	RUMP	EMA	RIB	IMF	RBV
-0.9	3	2.7	27	41	56	59	0.2	37	-1.1	1.6	-0.8	-0.6	1.4
50%	48%	70%	63%	66%	62%	49%	52%	55%	60%	44%	60%	52%	56%

August 2023 Speckle Park BREEDPLAN



Lot 28

HILLVIEW CIARA

A moderate framed quiet easy to handle female with longevity and fertility from her dam Wattle Grove 50S Sally F3 who has just calved as a 13 year old. We saw her sire DAM Dots 94A Electric 31E in Canada and loved the length and thickness he would add. Full sister to Lot 6. Paddock mated to Hillview Paddy RLB S58 on 14.05.23. Backed up to VSP T26 from 27.07.23



Sire

RIVER HILL GNK 12X (Speckled)
 RIVER HILL 12X A'MAN 94A (Speckled)
 PRAIRIE HILL PASSION 94P (Speckled)
Sire: **D.A.M. DOTS 94A ELECTRIC 31E (P) (White)**
 STAR BANK LACERTA 68L (Speckled)
 NOTTA 68L LIGHTNING LADY 31X (P) (White)
 STAR BANK 54R (P) (White)

PRAIRIE HILL DURMAX 93N (Black)
 PRAIRIE HILL JOHN WAYNE 50S (P) (Speckled)
 PRAIRIE HILL NABOB 50N (Speckled)
Dam: **WATTLE GROVE 50S SALLY F3 (ET) (Black)**
 CALAMASUE 4M (Speckled)
 MOOVIN ZPOTZ SALLY 9S (P) (Speckled)
 RIVER HILL MINDY 2M (Speckled)

Ident	DOB	Type	BW	Weight
RLB S61	6/11/2021	Female	36kgs	401kgs

Colour	Horn	Poll	Coat	MSTN	Leptin
Speckled	Polled	HPc	ED/e	Non Carrier (Free)	C/C

GL	MILK	BW	200	400	600	MCW	SS	CWT	RUMP	EMA	RIB	IMF	RBV
-0.5	5	1.2	17	23	33	31	0.2	21	0.3	1	0.3	0.3	0
43%	36%	66%	60%	57%	57%	44%	44%	45%	45%	34%	46%	40%	41%

August 2023 Speckle Park BREEDPLAN



Lot 29

HILLVIEW FRAN

A grand daughter of Hillview Freeway with a bit more frame. Will make a great cow. Paddock mated to Victorian E11 Eldorado T26 on 14.05.23



Sire

LEGACY UNRIVALED 12U (P) (Speckled)
 CODIAK TYCOON CAT GNK 12Z (P) (Speckled)
 SPOTS AND SPROUTS 7W

Sire: COLGAN'S DEXTER D'ANGELO 01D (P) (Speckled)

RIVER HILL 64S URBAN COWBOY 3U (P) (Speckled)
 SPOTS N SPROUTS 10Y (P) (White)
 SPOTS 'N SPROUTS 12U (P) (Speckled)

A & W 15R (P) (Leopard)
 HS UNTAPPED 3A (Speckled)
 NOTTA 2R PRETENDER 4T (P) (Speckled)

Dam: HILLVIEW FLEUR (AI) (ET) (P) (Leopard)

STAR BANK KING GEORGE 82U (P) (Speckled)
 HILLVIEW FREEWAY F3 (AI) (ET) (White)
 STAR BANK 50J (Speckled)

Ident	DOB	Type	BW	Weight
RLB S62	8/11/2021	Female	32kgs	405kgs

Colour	Horn	Poll	Coat	MSTN	Leptin
White	Polled	PcPc	ED/ED	Non Carrier (Free)	C/C

GL	MILK	BW	200	400	600	MCW	SS	CWT	RUMP	EMA	RIB	IMF	RBV
-0.2	1	0.6	10	11	11	6	-0.1	7	1.2	0.2	0.9	0.4	-0.7
49%	35%	64%	61%	58%	56%	42%	50%	45%	45%	35%	46%	40%	40%

August 2023 Speckle Park BREEDPLAN



Lot 30

HILLVIEW ROXETTE

A grand daughter of the great Stands Alone and Rendevous D27 with frame and length. Paddock mated to Victorian E11 Eldorado T26 on 14.05.23



Sire

RIVER HILL 50U ALL IN 60A (White)
 UNDERHILL ALL OUT 1D (P) (Speckled)
 SPOTS 'N SPROUTS 10S (P) (Speckled)

Sire: HILLVIEW FABIAN (AI) (ET) (P) (White)

STAR BANK KING GEORGE 82U (P) (Speckled)
 HILLVIEW FREEWAY F3 (AI) (ET) (White)
 STAR BANK 50J (Speckled)

STYALS LIGHTNING LADD 14P (P) (Speckled)
 SPOTS 'N SPROUTS STANDS ALONE (P) (White)
 SPOTS 'N SPROUTS 2R (P) (Speckled)

Dam: HILLVIEW S A ROXY (AI) (ET) (P) (Speckled)

P.A.R. MOO FASSA 03M (Speckled)
 SIX STAR 3M RENDEZVOUS D27 (ET) (Black)
 NOTTA RENDEZVOUS 65R (P) (Speckled)

Ident	DOB	Type	BW	Weight
RLB S66	1/12/2021	Female	33kgs	366kgs

Colour	Horn	Poll	Coat	MSTN	Leptin
Speckled	Polled	PcPc	ED/ED	Non Carrier (Free)	C/C

GL	MILK	BW	200	400	600	MCW	SS	CWT	RUMP	EMA	RIB	IMF	RBV
0.8	4	3.5	21	30	45	47	0.1	26	-1.4	1.7	-1	-0.7	1.6
44%	39%	69%	61%	64%	60%	46%	46%	52%	58%	41%	58%	50%	53%

August 2023 Speckle Park BREEDPLAN



Lot 31

HILLVIEW RUBY

This heifer is developing out into an impressive female. We are so pleased with her dam Hillview SA Rosie we added her to our donor pen last year. Paddock mated to Victorian E11 Eldorado T26 on 14.05.23



Dam

RIVER HILL 50U ALL IN 60A (White)
 UNDERHILL ALL OUT 1D (P) (Speckled)
 SPOTS 'N SPROUTS 10S (P) (Speckled)

Sire: HILLVIEW FABIAN (AI) (ET) (P) (White)

STAR BANK KING GEORGE 82U (P) (Speckled)
 HILLVIEW FREEWAY F3 (AI) (ET) (White)
 STAR BANK 50J (Speckled)

STYALS LIGHTNING LADD 14P (P) (Speckled)
 SPOTS 'N SPROUTS STANDS ALONE (P) (White)
 SPOTS 'N SPROUTS 2R (P) (Speckled)

Dam: HILLVIEW S A ROSIE (AI) (ET) (P) (Speckled)

P.A.R. MOO FASSA 03M (Speckled)
 SIX STAR 3M RENDEZVOUS D27 (ET) (Black)
 NOTTA RENDEZVOUS 65R (P) (Speckled)

Ident	DOB	Type	BW	Weight
RLB S67	5/12/2021	Female	32kgs	407kgs

Colour	Horn	Poll	Coat	MSTN	Leptin
White	Polled	PcPc	ED/ED	Non Carrier (Free)	C/C

GL	MILK	BW	200	400	600	MCW	SS	CWT	RUMP	EMA	RIB	IMF	RBV
-0.5	5	1.8	19	31	42	39	0	29	-0.6	2.4	-0.4	-0.2	1.1
46%	41%	69%	62%	64%	60%	47%	48%	53%	58%	41%	59%	51%	54%

August 2023 Speckle Park BREEDPLAN



Lot 32

HILLVIEW SARAH

Sarah was one of the Pair of heifers to come 3rd in the Dams Progeny Class at the 2023 Sydney Royal Speckle Feature show. She is a heifer with the potential to go a long way, her dam is fertile with plenty of milk and her sire is from one of the best herds in Canada. Unjoined.



Dam

STAR BANK 64R RIO 6W (P) (Speckled)
 RAVENWORTH KLEOS 3Y (P) (Speckled)
 STAR BANK TUCANA 38T (P) (Speckled)
Sire: **RAVENWORTH INVICTUS 103C (P) (Speckled)**
 SPOTS 'N SPROUTS STANDS ALONE (P) (White)
 RAVENWORTH NORTHERN STAR 101A (P) (Speckled)
 STAR BANK NIGHTGLOW 46N (Black)

HWY. 4 SPECKLE PARK 2H (Speckled)
 WATTLE GROVE MOONSHINE E10 (ET) (White)
 CODIAK MINDBENDER 59M (Leopard)
Dam: **WARATAH F15 SPANISH ANGEL J167 (AI) (ET) (P) (Leopard)**
 STAR BANK KING GEORGE 82U (P) (Speckled)
 WARATAH SPANISH ANGEL (ET) (P) (Black)
 RIVER HILL SPANISH ANGEL 5S (P) (Black)

Ident	DOB	Type	BW	Weight
RLB T11	4/5/2022	Female	33kgs	387kgs

Colour	Horn	Poll	Coat	MSTN	Leptin
White	Polled	PcPc	ED/ED	Non Carrier (Free)	C/T

GL	MILK	BW	200	400	600	MCW	SS	CWT	RUMP	EMA	RIB	IMF	RBV
0.1	5	0.9	16	21	31	41	0.4	22	1.1	0.9	0.8	0	0
49%	39%	75%	70%	64%	64%	51%	58%	52%	51%	41%	52%	46%	47%

August 2023 Speckle Park BREEDPLAN



Lot 33

Commercial F1 Cows

2 Females



Sire

16 month old heifers. Sired by Hillview Gerry RLB N5 out of Angus cows. Great future breeders. Mating details on Supplementary sheet.

STYALS LIGHTNING LADD 14P (P) (Speckled)
 SPOTS 'N SPROUTS STANDS ALONE (P) (White)
 SPOTS 'N SPROUTS 2R (P) (Speckled)

Sire: **HILLVIEW S A GERRY**

RIVER HILL 26T WALKER 60W (P) (Speckled)
 THREE WAY GRACELANDS (AI) (ET) (P) (Speckled)
 CODIAK UNIQUE GNK 8R (P) (Speckled)



Lot 34

Commercial F1 Cows

2 Females



Sire

12 month old heifers. Sired by Hillview Gerry RLB N5 out of Angus cows. Great future breeders.

STYALS LIGHTNING LADD 14P (P) (Speckled)
SPOTS 'N SPROUTS STANDS ALONE (P) (White)
SPOTS 'N SPROUTS 2R (P) (Speckled)

Sire: **HILLVIEW S A GERRY**

RIVER HILL 26T WALKER 60W (P) (Speckled)
THREE WAY GRACELANDS (AI) (ET) (P) (Speckled)
CODIAK UNIQUE GNK 8R (P) (Speckled)



BEST SERVICE
ETHICAL PRICING
LOCAL PRIDE
WIDEST RANGE

We're on the farmer's side, here to help with the advice, information, products and services you need to grow.

We stock over 7000 rural products and have been helping Hunter Valley farmers and rural residents for almost 20 years.

OUR PRODUCTS:

- Fencing
- Stock and pet feed
- Animal health
- Seed and fertiliser
- Ag chemicals
- Irrigation and water tanks
- Spraying equipment
- Stockyards

5 Kyle St, Rutherford NSW 2320
T 02 4932 0855 | F 02 4932 0822
WWW.FARMLANDCO.COM.AU

ASK US A QUESTION   



Thomas Livestock

Thomas Livestock has been servicing producers of the Hunter Valley and surrounding areas since 1952. We are licenced Stock and Station Agents and Auctioneers and we conduct livestock sales at HRLX Singleton.

With extensive knowledge and expertise in livestock and the rural property market we can help you with rural property sales, clearing sales, farm management services and advice on your livestock. We have a strong commitment to the local area and a passion for the rural industry.



HRLX Sales
Singleton Saleyards
56 Gresford Road,
Clydesdale NSW 2330

- Wednesday Fat Sale
 - Commences @ 8:30 am
- 2nd Sat Each Month
 - Commences @ 10:00 am



 0428 685 878

 PO BOX 36 Branxton

 thomaslivestock.com.au

 admin@thomaslivestock.com.au



Lot 35

HILLVIEW S A GERRY

5 Straws

A son of the great Stands Alone from a equally great dam in Three Way Gracelands G0019. A slick coated, dark skinned bull packed with beef ideal for the Northern conditions. Gerry is leaving his mark on our herd. Semen is stored at Northern Artificial Breeders Score.

HWY.4 SPECKLE PARK 20K (Speckled)
 STYALS LIGHTNING LADD 14P (P) (Speckled)
 LIGHTNING LADY 10C (Speckled)

Sire: **SPOTS 'N SPROUTS STANDS ALONE (P) (White)**

STAR BANK LACERTA 68L (Speckled)
 SPOTS 'N SPROUTS 2R (P) (Speckled)
 SPOTS 'N SPROUTS 21L (Speckled)

RIVER HILL TRAFFIC JAM 26T (P) (Speckled)
 RIVER HILL 26T WALKER 60W (P) (Speckled)
 RIVER HILL SHOW ME OFF 60S (P) (Speckled)

Dam: **THREE WAY GRACELANDS (AI) (ET) (P) (Speckled)**

CODIAK MR. BLACK RKW 13M (Black)
 CODIAK UNIQUE GNK 8R (P) (Speckled)
 CODIAK RKW 07J (Speckled)

Ident	DOB	Type	BW	Weight
RLB N5				

Colour	Horn	Poll	Coat	MSTN	Leptin
Speckled	Polled	PcPc	ED/ED	Carrier	

GL	MILK	BW	200	400	600	MCW	SS	CWT	RUMP	EMA	RIB	IMF	RBV
-0.5	5	2.1	22	34	51	58	0.3	30	-0.2	1.1	-0.1	0	0.3
64%	62%	81%	75%	75%	73%	64%	65%	66%	68%	58%	68%	63%	65%

August 2023 Speckle Park BREEDPLAN



Lot 36

UNLIMITED SPOTS GRNWD FUTURE20F

5 Straws

Future LAF20F is a structurally correct sire leaving heavily muscled calves, great for producing those extra kgs for any market. Semen is stored at Holbrook Breeders.

Sire: RIVER HILL BACKGROUNDER 025B (Speckled)
 RIVER HILL TRAFFIC JAM 26T (P) (Speckled)
 RIVER HILL 26T YAGER 99Y (Leopard)
 PRAIRIE HILL HEARTBREAKER 99L (White)
 NOTTA SHOWOFF 64S (P) (Speckled)
 RIVER HILL 64S WHISPER 25W (P) (Leopard)
 RIVER HILL RIVIERA 25R (P) (Leopard)

Dam: BLACKIE RAINA OF P.A.R. 21Z (Black)
 P.A.R. TOUCH DOWN 600T (P) (Leopard)
 P.A.R. XCALABAR 6X (P) (Speckled)
 MONALISA OF P.A.R. 6M (Speckled)
 P.A.R. KING PIN 1K (Speckled)
 RAINA OF P.A.R. 21R (P) (Speckled)
 ANGEL OF P.A.R. 2K (Leopard)

Ident	DOB	Type	BW	Weight
LAF 20F				

Colour	Horn	Poll	Coat	MSTN	Leptin
Speckled		PP	ED/ED	Non Carrier (Free)	

GL	MILK	BW	200	400	600	MCW	SS	CWT	RUMP	EMA	RIB	IMF	RBV
-0.4	4	1.1	19	11	18	15	-0.2	10	1.1	0.3	0.8	0	-0.3
56%	25%	86%	79%	73%	71%	52%	58%	56%	54%	41%	55%	47%	49%

August 2023 Speckle Park BREEDPLAN



Lot 37a

RIVER HILL BEARDO 100J

5 Straws of Sexed Female Semen

Lot 37b

RIVER HILL BEARDO 100J

5 Straws of Sexed Female Semen

We really liked this bull at Agribition and took the opportunity to add him to our herd. Beardo has extra frame, which we like. He will add length and depth while bringing up frame score. Take this package home and build some heifer embryos. AI permit pending. Semen is stored at Holbrook Breeders.

Sire:

RIVER HILL EL-BEARDO 354E

- RIVER HILL 68L STRIKER 50U
- RIVER HILL 50U ALL IN 60A
- RIVER HILL SHOW ME OFF 60S
- NOTTA CUSTOM CHROME 106Y
- RIVER HILL AVET-CINDER 54A
- RIVER HILL YVET-CINDER 54Y

Dam:

DIAMON K RANCH DAYDREAMER

- UNEEDA XENON 13X
- UNEEDA ZEKE 601Z
- TESS OF UNEEDA 60T
- P.A.R. MR UNIVERSE 66U
- DIAMON K MR LIL STAR 5X
- CODIAK UNIQUE 1U

Ident	DOB	Type	BW	Weight	Colour	Horn	Poll	Coat	MSTN	Leptin
BED 100J					Speckled	Polled	PP	ED/ED	Non Carrier (Free)	



Lot 38

WOLF LAKE FIELD READY 52F

Wolf Lake Field Ready 52F is a bull that's legacy is only beginning to take shape. His consistency in progeny has been a testament to his performance, including having sired the 2022 Agribition Reserve Champion female Wolf Lake Ida 4J. Semen stored at Holbrook Breeders, Australia.



Progeny

GL	MILK	BW	200	400	600	MCW	SS	CWT	RUMP	EMA	RIB	IMF	RBV
0.9	12	2.6	19	32	38	31	0.1	24	-0.5	1.1	-0.2	0.4	0.1
64%	54%	79%	74%	70%	69%	58%	58%	58%	55%	46%	55%	50%	51%

August 2023 Speckle Park BREEDPLAN

5 Straws

Sire: RIVER HILL 26T YAGER 99Y (Leopard)
 A & W JOEY 55P (Speckled)
 RIVER HILL TRAFFIC JAM 26T (P) (Speckled)
 CALAMASUE 26R (P) (Speckled)
 P.A.R. HEMORRHOID 25H (Speckled)
 PRAIRIE HILL HEARTBREAKER 99L (White)
 PRAIRIE HILL FANCY PANTS 93J (Speckled)

Dam: NOTTA PHO-FINISH 54P (Speckled)
 SPOTS 'N SPROUTS JUNO 103J (Speckled)
 STAR BANK LACERTA 68L (Speckled)
 STAR BANK 55H (Speckled)
 NORALTA 9E
 STAR BANK LEONID NIGHT 54L (Speckled)
 STAR BANK 11E

Ident	DOB	Type	BW	Weight
DHB 52F				

Colour	Horn	Poll	Coat	MSTN	Leptin
White	Polled	PcPc	ED/ED	Non Carrier (Free)	

Guest Vendor Wolf Lake Speckle Park



Lot 39

LEGACY CRUSHED CAN 64G

Legacy Crushed Can 64G is an outcross bull that can be crossed onto just about everything. Selected for his strong maternal line and longevity. Crushed Can calves have been looking great here in Canada and we look forward to seeing calves in Australia. Semen stored at Holbrook Breeders, Australia.

5 Straws

LEGACY SCOUT 10S (P) (Speckled)
 LEGACY UNLEASHED 73U (P) (Speckled)
 LEGACY PATTY 8P (Speckled)

Sire: LEGACY BONE CRUSHER 35B (P) (Leopard)

LEGACY UNLEASHED 73U (P) (Speckled)
 LEGACY JINGLE 89X (P) (Speckled)
 LEGACY UNIFIC 6U (P) (Speckled)

SPOTS 'N SPROUTS JUNO 103J (Speckled)
 STAR BANK 94M (Speckled)
 JANETTE OF P.A.R. 44H (Speckled)

Dam: STAR BANK ROSA 37R (P) (Speckled)

DOUBLE RR RASCAL 183'88
 LIGHTNING LADY 19C
 DOUBLE RR ANGEL 192'88

Ident	DOB	Type	BW	Weight
CJT 64G				

Colour	Horn	Poll	Coat	MSTN	Leptin
Speckled	Polled	Homozygous Polled (PcPc)	Homozygous Dominant Black (ED/ED)	Non Carrier (Free)	

GL	MILK	BW	200	400	600	MCW	SS	CWT	RUMP	EMA	RIB	IMF	RBV
-0.7		-0.6	4	8	13	15	0.5	8	1.1		0.8		
29%	%	46%	42%	40%	39%	30%	28%	30%	28%	%	29%	%	%

August 2023 Speckle Park BREEDPLAN

Guest Vendor Wolf Lake Speckle Park



Lot 40

D.A.M. DOTS JOKER 24J

5 Straws of Sexed Female Semen

Hillview holds the Australian semen rights to this lovely young sire. His dam is a beautiful maternal cow with a correct udder and good feet both attributes that we place a great emphasis on in our program. This is the first release of semen in an auction in the Australian market. Semen is stored at Holbrook Breeders.

LEGACY HOPSCOTCH (Speckled)
LEGACY BOURBON 63A (P) (Speckled)
LEGACY UNITY 45U (P) (Speckled)

Sire: LEGACY SOLIDUS 179D (P) (Speckled)

STAR BANK 94M (Speckled)
STAR BANK 34R (P) (Speckled)
STAR BANK 11E

RIVER HILL 101U XODUS 60X (P) (Speckled)
RAVENWORTH TORQUE 116A (P) (Speckled)
STAR BANK TARAZED 46T (P) (Speckled)

Dam: D.A.M. DOTS CAROLINE 24C (P) (White)

STAR BANK EXTOLLER 93X (P) (Speckled)
STAR BANK ALHENA 53A (P) (White)
STAR BANK EXTRAGALACTIC 76X (P) (Speckled)

Ident	DOB	Type	BW	Weight
DAM 24J				

Colour	Horn	Poll	Coat	MSTN	Leptin
White	Polled	Homozygous Polled (PcPc)	Homozygous Dominant Black (ED/ED)	Non Carrier (Free)	

GL	MILK	BW	200	400	600	MCW	SS	CWT	RUMP	EMA	RIB	IMF	RBV
%	%	0.5	4	6	11	%	0	%	%	%	%	%	%
		42%	37%	32%	32%		26%						

August 2023 Speckle Park BREEDPLAN



Lot 41a

D.A.M. DOTS JOKER 24J

5 Straws Conventional Semen

Lot 41b

D.A.M. DOTS JOKER 24J

5 Straws Conventional Semen

Hillview holds the Australian semen rights to this lovely young sire. His dam is a beautiful maternal cow with a correct udder and good feet both attributes that we place a great emphasis on in our program. This is the first release of semen in an auction in the Australian market. Semen is stored at Holbrook Breeders. Conventional semen from the same young bull as the previous lot.

Sire: LEGACY HOPSCOTCH (Speckled)
 LEGACY BOURBON 63A (P) (Speckled)
 LEGACY UNITY 45U (P) (Speckled)
LEGACY SOLIDUS 179D (P) (Speckled)
 STAR BANK 94M (Speckled)
 STAR BANK 34R (P) (Speckled)
 STAR BANK 11E

RIVER HILL 101U XODUS 60X (P) (Speckled)
 RAVENWORTH TORQUE 116A (P) (Speckled)
 STAR BANK TARAZED 46T (P) (Speckled)
Dam: **D.A.M. DOTS CAROLINE 24C (P) (White)**
 STAR BANK EXTOLLER 93X (P) (Speckled)
 STAR BANK ALHENA 53A (P) (White)
 STAR BANK EXTRAGALACTIC 76X (P) (Speckled)

Ident	DOB	Type	BW	Weight	Colour	Horn	Poll	Coat	MSTN	Leptin
DAM 24J					White	Polled	Homozygous Polled (PcPc)	Homozygous Dominant Black (ED/ED)	Non Carrier (Free)	



Lot 42

**HILLVIEW T S MELANIE
x COLGANS FRASIER CF 11F**

3 Embryos

Hillview Melanie is a big wide white Trade Secret daughter with a power of milk. She has Interbreed Senior Championships to her name and will create a foundation line for any herd. Embryos Stored at Northern Artificial Breeders Scone.

MOOVIN ZPOTZ CAMARO 6X (Leopard)
COLGAN'S BAXTER 1B (White)
MOOVIN ZPOTZ ROXY AMBER 4R (P) (Speckled)

Sire: **COLGANS FRASIER CF 11F**

CODIAK TRUMP GNK 20T (P) (Speckled)
CODIAK RHANA GNK 70Y (P) (Speckled)
CODIAK CDK 26P (Leopard)

SEMEX ALLIANCE YOGI GOES REDNECK (Speckled)
JOHNER STOCK FARM TRADE SECRET (White)
MONNERY RIVER 7W (P) (Speckled)

Dam: **HILLVIEW T S MELANIE**

RIVER HILL 26T WALKER 60W (P) (Speckled)
WATTLE GROVE 60W MELISSA G46 (ET) (Speckled)
CODIAK MELISA RKW 64M (Speckled)



Lot 43

**AAA LITTLE LADY M4
x STAR BANK LACERTA 68L**

3 Embryos

Little Lady is a beautiful moderate speckled cow with great structure and milk from the renowned maternal Putnam family. She was the dam of the 2021 Scone sale top priced animal and joined with Lacerta one of the breeds all time greats this combination is sure to give you animals destined to breed on in your herd.

P.A.R. GREAT WESTERN 11F
SPOTS 'N SPROUTS JUNO 103J (Speckled)
PUSSY KAT II OF P.A.R. 11D (Speckled)

Sire: **STAR BANK LACERTA 68L**

NORALTA 9E
STAR BANK 55H (Speckled)
STAR BANK 43F

CODIAK OSCAR GNK 8S (P) (Leopard)
CODIAK PUTNAM GNK 61Y (P) (Leopard)
NORTHERN LIGHTS 14N (White)

Dam: **AAA LITTLE LADY M4**

STAR BANK KING GEORGE 82U (P) (Speckled)
82U LIGHTNING LADY G61 (ET) (Speckled)
STAR BANK 5P (Speckled)



Lot 44

**WARATAH F15 SPANISH ANGEL J167
X COLGAN'S DEXTER D'ANGELO 01D**

3 Embryos

A Spanish Angel x Moonshine daughter, top shelf Australian genetics combined with D'Angelo. Lot 7 in this sale is progeny of this combination. This will be our last offering of embryos from this great cow.

LEGACY UNRIVALED 12U (P) (Speckled)
CODIAK TYCOON CAT GNK 12Z (P) (Speckled)
SPOTS AND SPROUTS 7W

Sire: **COLGAN'S DEXTER D'ANGELO 01D**

RIVER HILL 64S URBAN COWBOY 3U (P) (Speckled)
SPOTS N SPROUTS 10Y (P) (White)
SPOTS 'N SPROUTS 12U (P) (Speckled)

HWY. 4 SPECKLE PARK 2H (Speckled)
WATTLE GROVE MOONSHINE E10 (ET) (White)
CODIAK MINDBENDER 59M (Leopard)

Dam: **WARATAH F15 SPANISH ANGEL J167**

STAR BANK KING GEORGE 82U (P) (Speckled)
WARATAH SPANISH ANGEL (ET) (P) (Black)
RIVER HILL SPANISH ANGEL 5S (P) (Black)

Notes



Notes



Thank you!

We would like to thank everyone who has helped to make this sale a success. Congratulations to all successful purchasers we hope you enjoy your new animals.

Robert and Leanne



